

## Foglight® for SAP HANA

To keep databases running at peak performance and ensure business continuity, DBAs need granular, real-time information about database performance and availability. Automated alerts, change tracking, compliance reporting and centralized management are also critical, especially in highly distributed environments.

With Foglight® for SAP HANA, DBAs can quickly and easily detect, diagnose and resolve performance issues — wherever, whenever and however they occur. Intuitive web-based dashboards alert you to emerging issues that might affect performance or availability, and a clear enterprise-wide view helps you optimize your entire physical, virtual and cloud-based SAP HANA environment.

Foglight offers unattended 24x7 data collection, while its agentless architecture and minimal footprint ensure overhead is negligible on monitored hosts. And, it's easy to deploy, so you can be up and running in no time.

### FEATURES

Foglight provides a real-time, enterprise-wide view along with numerous

features that help you optimize the performance of your physical, virtual and cloud-based SAP HANA database servers.

### Server overview

Quickly review server health, performance and workload across your SAP HANA environment. Foglight combines database metrics with host metrics to provide a complete picture of database server performance.

### Workload analysis

See the amount of work each server is doing to support user requests. Drill down into every dimension of your data, including memory, host load, services, SQL plans, expensive statements, blocked transactions and tables.

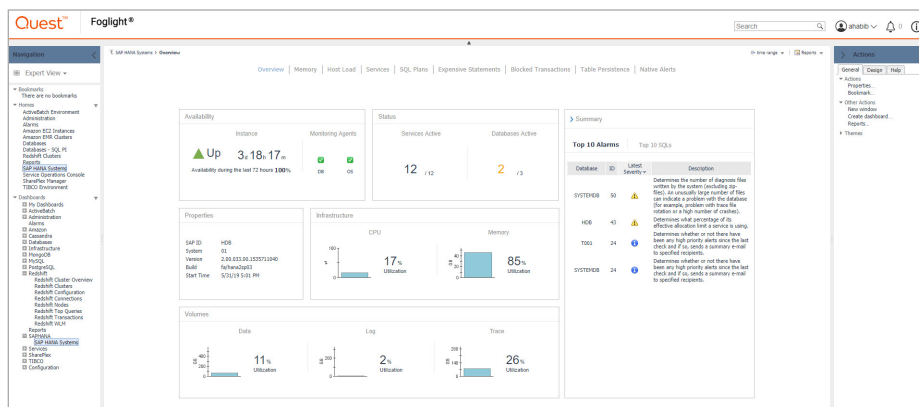
### Database overview

Understand the health and performance of all your system and tenant databases at a glance, including calculated workload, services, databases, volumes, top SQL and alarms. Drill down to detailed performance statistics for any database simply by selecting that database.

Rapidly detect, diagnose and resolve performance issues across your physical, virtual and cloud-based SAP HANA database servers.

### BENEFITS:

- Helps maintain business continuity by providing real-time monitoring of database performance and intelligent alerting
- Enables understanding of server and database health and performance at a glance
- Provides centralized monitoring, management and reporting across datacenters
- Speeds troubleshooting with convenient drill-down into granular details and expert advice
- Provides intelligent alerting with a comprehensive workflow to minimize false alarms
- Offers enterprise scalability, so you can monitor hundreds of SAP HANA database servers from a single management server
- Minimizes overhead on monitored database instances by executing data collection through remote agents



Proactively monitor database health and performance across your entire environment through a single console.

## SYSTEM REQUIREMENTS

### SOFTWARE

#### Supported database versions:

SAP HANA 2.0  
SPS 02 Rev 20+

Requires Foglight Management Server (FMS) version 5.9.2 or higher

FgIAM 5.8.5.2 or higher

### SUPPORTED DEPLOYMENT LOCATIONS

Both on-premises and cloud deployments

### Memory monitoring

See current instance memory including physical total, allocation limit, peak used and amount used by HANA.

### Monitor SAP HANA services

Ensure availability and monitor resource consumption of each SAP HANA service, with a breakdown of consumption by CPU, memory allocation, current memory usage, peak memory usage and percentage of allocation used.

### Host load analysis

As an in-memory database, administrators need to understand and track system load and resource usage growth. Foglight for SAP HANA provides detailed information on all critical host metrics along with historical data analysis and trending to ensure you have the resources you need when you need them.

### Services monitor

Track the health and availability of critical SAP HANA components and services including the index server, extended application server (XS), preprocessor, nameserver, and DI-Server.

### SQL query analysis

Evaluate the performance of both critical and expensive statements with a complete breakdown showing the query, database, application name, number of executions, average response time, locks and more. View, sort or search the top statements collected from the server. Visualize execution plans and statement hash.

### Blocked transaction monitoring

Prevent locks from slowing your transaction processing by getting timely alerts and drilling down to lock information by database. Foglight for SAP HANA provides a complete list of all locks, the transaction state, the lock owner and the blocked transactions.

### Table persistence

Analyze and track historical data for all tables. See breakdown of tables by database, and track all read/write activity by table. Track event counts and understand when tables were last modified.

### Native alerts

In addition to Foglight for SAP HANA's out-of-the-box alerts, it tracks and stores a history of all native SAP HANA alerts. This allows operators to build a centralized knowledge base with best practices for problem resolution.

### Intelligent alerting

Avoid false alerts with adaptive IntelliProfile thresholds, which ensure that alarms are triggered only when baselines are breached. Easily manage and annotate alarms, including scheduling blackouts for maintenance periods.

### Easy troubleshooting

Speed problem resolution and discover chronic issues with embedded expert advice and convenient drill-down to granular details.

### Enterprise-scale monitoring

Monitor hundreds of SAP HANA database servers from a single management server.

### Low overhead

Execute data collection through remote agents that ensure minimal overhead (no more than 2% CPU) is added to monitored database instances.

### High granularity

Ensure high-integrity data collection with frequent collections, or customize collection frequency to meet your business requirements.

### Embedded repository

Store historical monitoring data in the embedded data warehouse — there is no need to purchase or install additional database instances for storage of monitoring data. External repositories can be leveraged in larger deployments.

## ABOUT QUEST

Quest provides software solutions for the rapidly-changing world of enterprise IT. We help simplify the challenges caused by data explosion, cloud expansion, hybrid datacenters, security threats and regulatory requirements. Our portfolio includes solutions for database management, data protection, unified endpoint management, identity and access management and Microsoft platform management.